

ONE WAY FENCING

FENCING SPECIFICATIONS

Fence panel size; 1500 X 950 X 4.5mm green recycled polypropylene panels

FITTED MEASUREMENTS

300mm vertically below ground, 400mm vertically above ground

TECHNICAL DATA

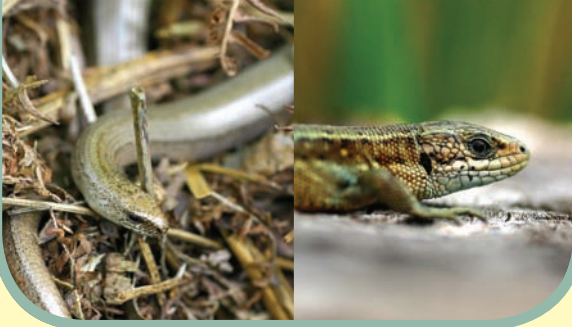
Density	Kg/m ³	930
Tensile strength (Mpa)	N/mm ²	26.0
Elongation at break	%	460
Flexural yield strength (Mpa)	N/mm ²	42.0
Flexural modulus (Mpa)	N/mm ²	1250
Linear Thermal expansion	mm/m/°c	0.150
Surface spread of flame		Class 3

FITTING DESCRIPTION

The fence panels are fitted either into a 300 x 50mm slit created by a V backed sub soiler or "wiz" plough pulled by a tractor or in a trench excavated using a chain trencher or mini digger. Alternatively, if necessary, the trench is dug by hand.

The preferred method for best results and most efficient fitment is the slitting method, where conditions suit. Once the panels are sited the slit is closed up by driving back along the line of the fence with a tractor, vehicle or compacted by hand. This creates a total seal between the soil and panels, which are fitted to the side of the trench nearest to the relevant population or the inside if a containment area. The panels are overlapped by 50mm then secured by aluminium blind rivets along the overlap joint. Panels can be cut down or the overlap increased to allow for uneven ground or contours.

HERPETOSURE® fencing is designed to be reusable and recyclable, it also has a high level of impact resistance, therefore offering a much higher level of boundary security and removing the need to landfill expired fencing materials at the end of the project. **ZERO project waste.**

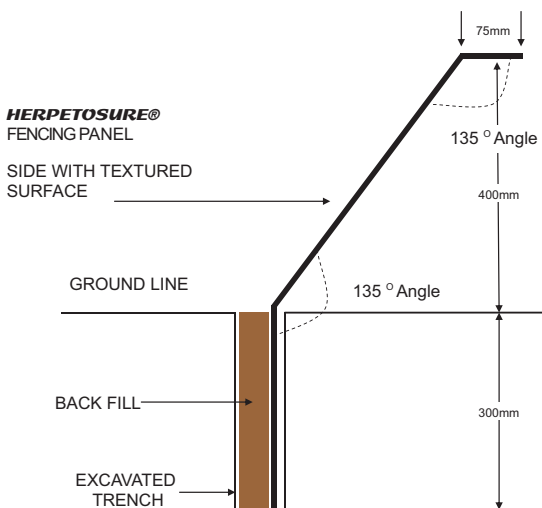


Photographs © 2007 David Green www.natureimage.co.uk

Patent Application No: 0425617.8

Suitable for Newts, Reptiles and Slow-worms

NOT TO SCALE



Piper Hole Farm | Eastwell Road
Scalford | Leicestershire LE14 4SS
Telephone: 01664 444 660 | Fax: 01664 444 605
E-mail: info@herpetosure.com

www.herpetosure.com

HERPETOSURE®

Ecological Solutions